

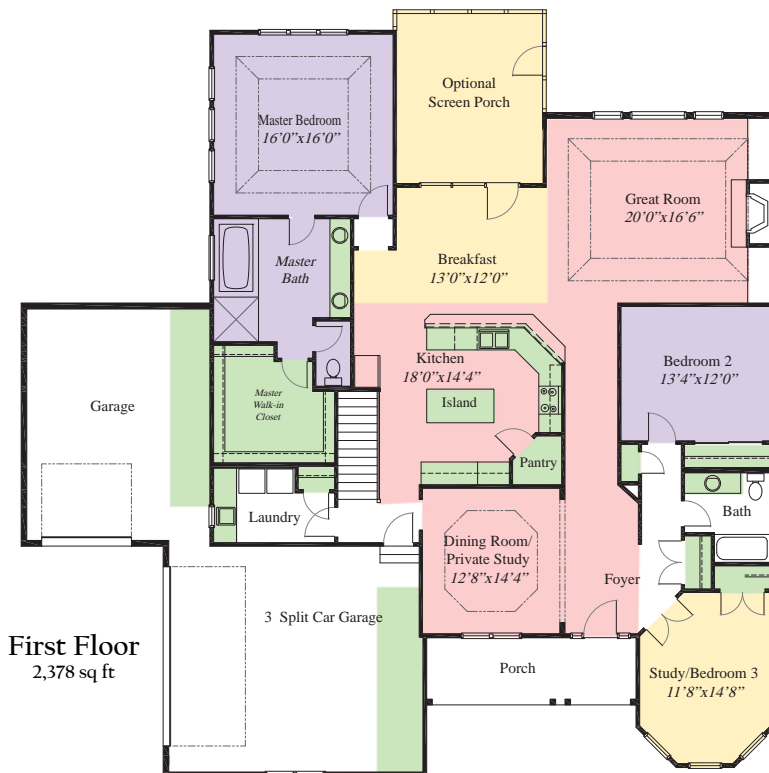
# Featured Plan

## The Winchester



2,378 SqFt Custom Ranch plan with 3 Bedrooms 2 Baths and an open floor plan, perfect for family gatherings or entertaining. The Foyer opens up into an open Dining Room and a Private Study, which can serve as a 3rd Bedroom and if needed. The Dining Room can be closed off and serve as a Private Study under the 3rd Bedroom option if desired. The Gourmet Kitchen is open to a large Casual Dining area and the Great Room, which has a Fireplace and Built-ins. This Ranch has a Master Suite, with a deluxe Bath, Walk-in Closet and a coffered ceiling. A separate Laundry Room is near the Garage. A 2+1 Car, Split Garage and a Full Basement add to the Storage of this plan. The Full Basement is perfect for additional finished space.

[WWW.RH-HOMES.COM](http://WWW.RH-HOMES.COM)



First Floor  
2,378 sq ft

- Entertainment Areas
- De-Stressing Zones
- Flexible Living Space
- Storage & DeCluttering Options



©Romanelli & Hughes Building Company – Custom Home Builders

All home plans present on this site/brochure are protected by copyright. Reproduction of these home plans, either in whole or in part, including any form and/or preparation of derivative works thereof, for any reason without prior written permission is strictly prohibited. Renderings, including landscaping, colors, materials and finishes are an artist's concept, and for aesthetic purposes only. This brochure is for illustration purposes and not part of any legal document. Request a set of blueprints for exact dimensions. The information on this brochure is subject to change without any notice.

Penalties for violating a copyright may be severe. The responsible parties are required to pay actual damages caused by the infringement (which may be substantial), plus any profits made by the infringer commissions to include all profits and from the sale of any home built from an infringing design. The copyright law also allows for the recovery of statutory damages, which may be as high as \$150,000.00 for each infringement. Finally, the infringer may be required to pay legal fees which often exceed the damages.