

Featured Plan

The Pissario



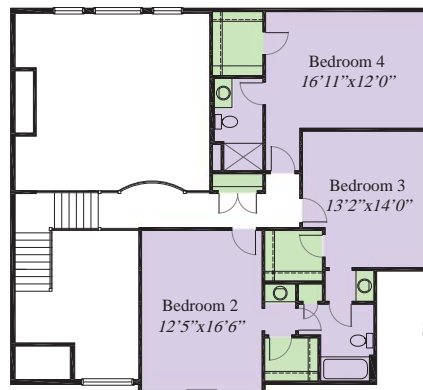
3,275-4,409 SqFt home, featuring 4 Bed-rooms, 3 1/2 Baths and a 3 car garage. The Gourmet Kitchen has a large working island, Breakfast area and a walk-in Pantry. The Great Room is finished with custom built-ins, a fireplace, side bar and a 2-story ceiling. Off the main Foyer is a Private Study and a Formal Dining Room. The First Floor Master Bedroom has a coffered ceiling, huge walk-in closet and a deluxe Bath. The second level features 3 Bed-rooms, each with a walk-in closet. A gorgeous Balcony overlooks the entertaining spaces in this custom plan. A full, poured wall Basement is included.

WWW.RH-HOMES.COM

Total Living Space
3,436 sq ft as shown



First Floor
2,436 sq ft



Second Floor
1,000 sq ft



©Romanelli & Hughes Building Company – Custom Home Builders

All home plans present on this site/brochure are protected by copyright. Reproduction of these home plans, either in whole or in part, including any form and/or preparation of derivative works thereof, for any reason without prior written permission is strictly prohibited. Renderings, including landscaping, colors, materials and finishes are an artist's concept, and for aesthetic purposes only. This brochure is for illustration purposes and not part of any legal document. Request a set of blueprints for exact dimensions. The information on this brochure is subject to change without any notice.

Penalties for violating a copyright may be severe. The responsible parties are required to pay actual damages caused by the infringement (which may be substantial), plus any profits made by the infringer commissions to include all profits and from the sale of any home built from an infringing design. The copyright law also allows for the recovery of statutory damages, which may be as high as \$150,000.00 for each infringement. Finally, the infringer may be required to pay legal fees which often exceed the damages.