

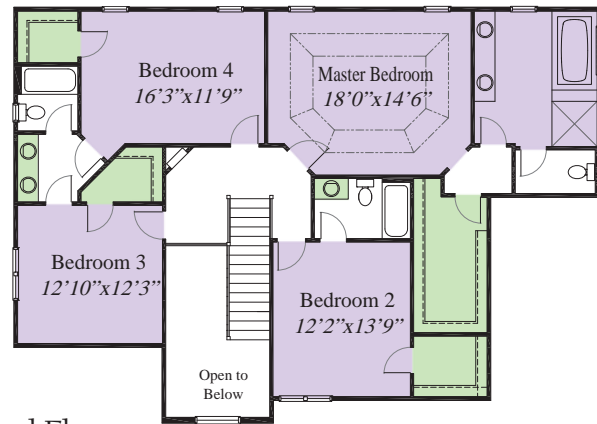
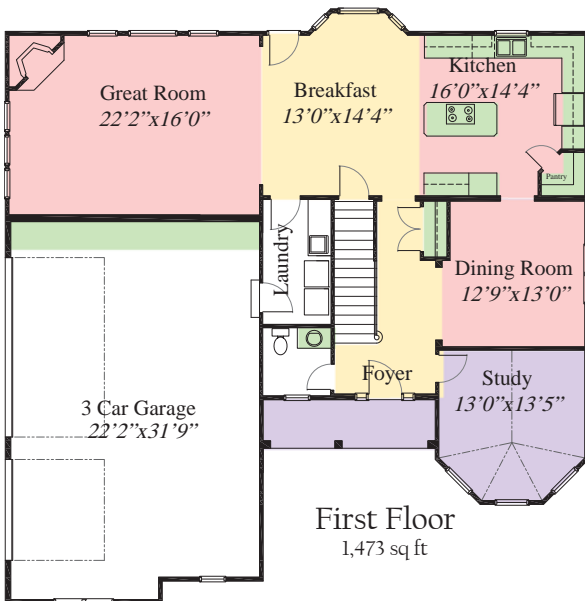
Featured Plan

The Cambridge



2,905 SqFt 4 Bedroom custom home with large, open entertaining spaces, including a Gourmet Kitchen with a granite island and a walk in Pantry. Adjoining the kitchen is a spacious Breakfast area, which is open to the Great Room. This level is complete with a Dining Room and a spectacular Study with a cathedral ceiling. The second level offers a Dramatic Master Bedroom with a Deluxe Bath & coffered ceiling. All Bedrooms are spacious and have Walk in Closets. This plan has a 3 car garage and a full basement, perfect for storage or additional finished space.

WWW.RH-HOMES.COM



- Entertainment Areas
- De-Stressing Zones
- Flexible Living Space
- Storage & DeCluttering Options



Romanelli & Hughes Building Company – Custom Home Builders

All home plans present on this site/brochure are protected by copyright. Reproduction of these home plans, either in whole or in part, including any form and/or preparation of derivative works thereof, for any reason without prior written permission is strictly prohibited. Renderings, including landscaping, colors, materials and finishes are an artist's concept, and for aesthetic purposes only. This brochure is for illustration purposes and not part of any legal document. Request a set of blueprints for exact dimensions. The information on this brochure is subject to change without any notice.

Penalties for violating a copyright may be severe. The responsible parties are required to pay actual damages caused by the infringement (which may be substantial), plus any profits made by the infringer commissions to include all profits and from the sale of any home built from an infringing design. The copyright law also allows for the recovery of statutory damages, which may be as high as \$150,000.00 for each infringement. Finally, the infringer may be required to pay legal fees which often exceed the damages.