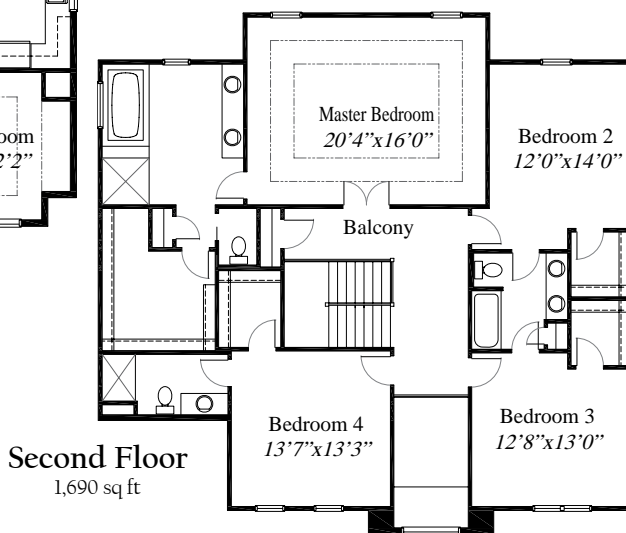
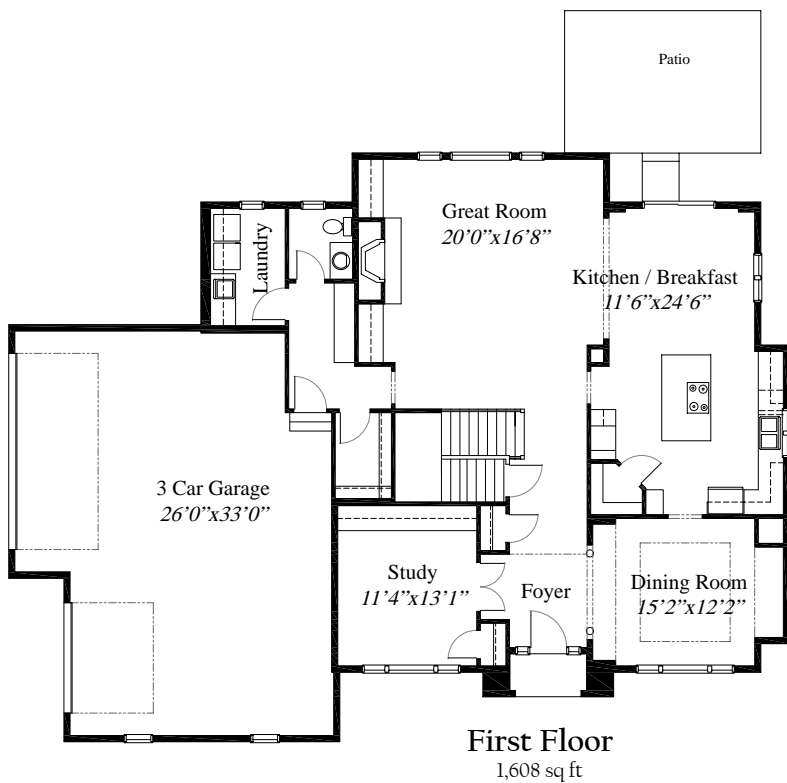


Featured Plan

The Revere



3,298 SqFt home with 4 Bedrooms, 3 1/2 Baths, a full Basement and a 3 Car Garage. This home is centered around a large Great Room with custom built-ins and a fireplace, all open to the Casual Dining area and Gourmet Kitchen. The Kitchen features a Walk-in Pantry, working island and Granite counters. A Formal Dining Room and Private Study flank the 2-Story Foyer. On the upper level is a Master Bedroom with a Deluxe Master Bath, Walk-in Closet and a 10' coffered ceiling. Three other Bedrooms with walk-in closets and 2 Baths finish this level.



WWW.RH-HOMES.COM



The renderings in this brochure are an artist's concept of elevations from blueprints. The landscaping features, colors and textures are for aesthetic purposes only. Floor plans and sizes are subject to change without notice. Consult a set of blueprints for exact dimensions and details. Some of the features shown can be optional. This brochure is for illustration purposes only and is not part of any legal document.