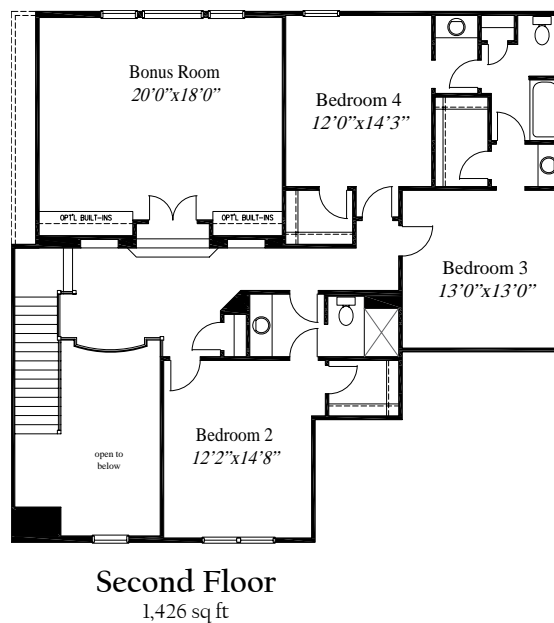
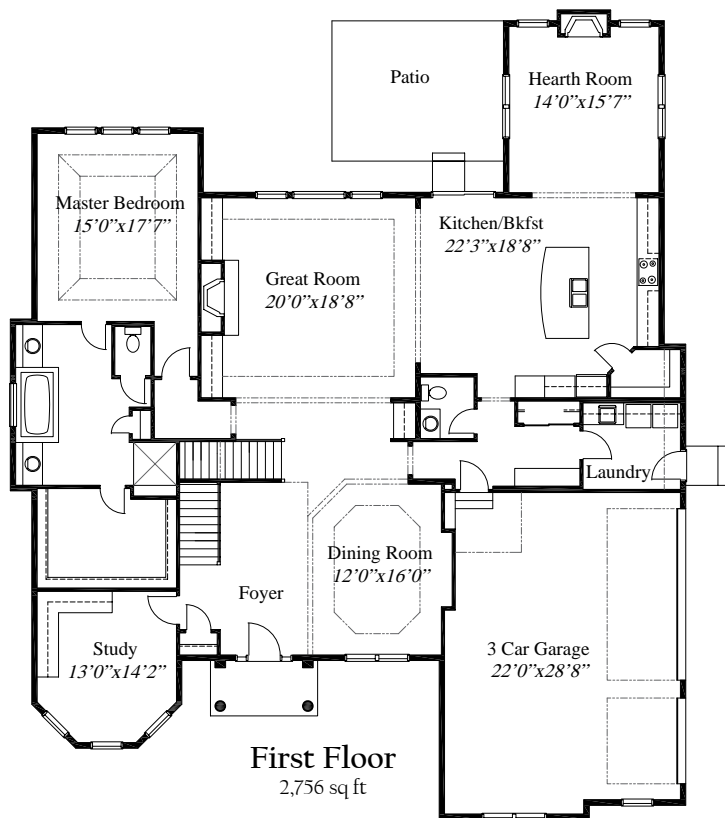


Featured Plan

The Pollino



4,182 SqFt home with 4 Bedrooms, a Bonus Room, 3 1/2 Baths and a 3 Car side load Garage. 10' ceilings and 8' doors are also featured. The Great Room has a fireplace & custom built-ins. It opens to a Breakfast area and Gourmet Kitchen with an island and walk-in pantry. Off the Kitchen is a Hearth Room with a fireplace and access to an outdoor patio. This level also has a Formal Dining Room and Private Study off the main Foyer. The First Floor Master Bedroom Suite has a coffered ceiling, Deluxe Bath, and walk-in closet. The second level offers 3 additional bedrooms, one with a private Bath and the others with an adjoining bath area.



WWW.RH-HOMES.COM



The renderings in this brochure are an artist's concept of elevations from blueprints. The landscaping features, colors and textures are for aesthetic purposes only. Floor plans and sizes are subject to change without notice. Consult a set of blueprints for exact dimensions and details. Some of the features shown can be optional. This brochure is for illustration purposes only and is not part of any legal document.