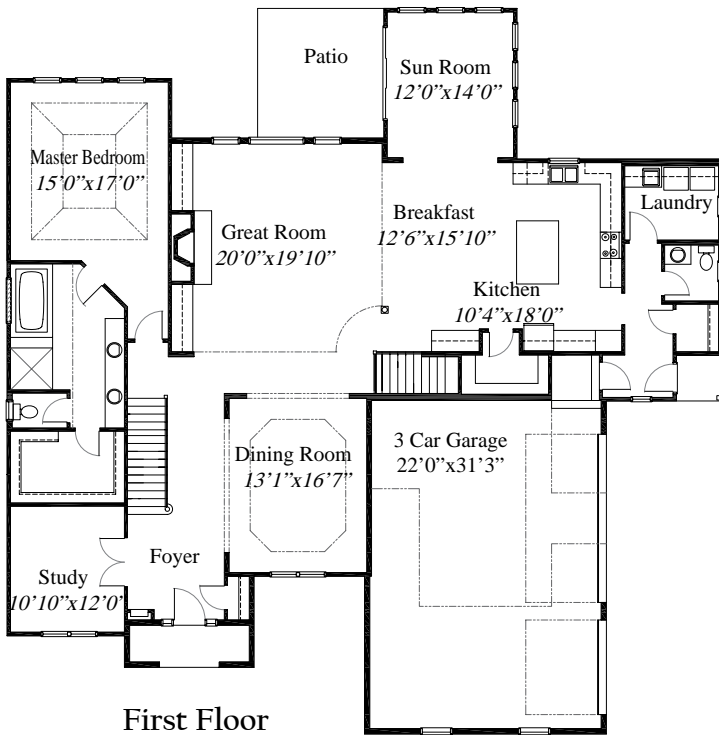


Featured Plan

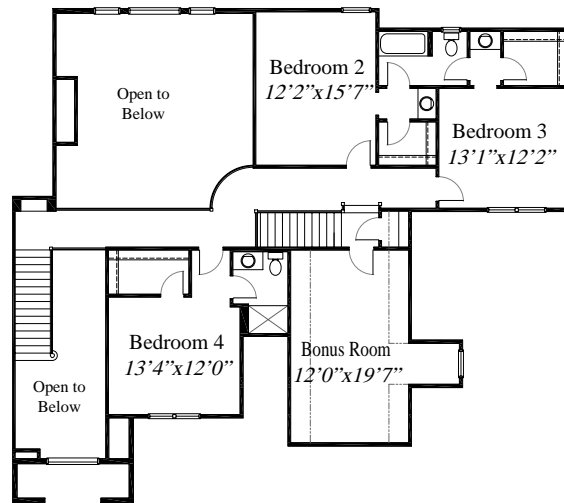
The Trentino



3,894 SqFt home features a large 2-story Great Room with a fireplace centered along a wall of custom built-in shelving. The Gourmet Kitchen opens into a Breakfast area leading to a Sun Room. This level also has a formal Dining Room as well as a Private Study. The first floor Master Suite includes a large Bath and walk-in closet. The Second Floor features a balcony overlooking the spacious Great Room. There are 3 additional Bedrooms, a Bonus Room and 2 Full Baths. This custom home has a 3 Car Side-Load Garage.



First Floor
2,566 sq ft



WWW.RH-HOMES.COM



The renderings in this brochure are an artist's concept of elevations from blueprints. The landscaping features, colors and textures are for aesthetic purposes only. Floor plans and sizes are subject to change without notice. Consult a set of blueprints for exact dimensions and details. Some of the features shown can be optional. This brochure is for illustration purposes only and is not part of any legal document.