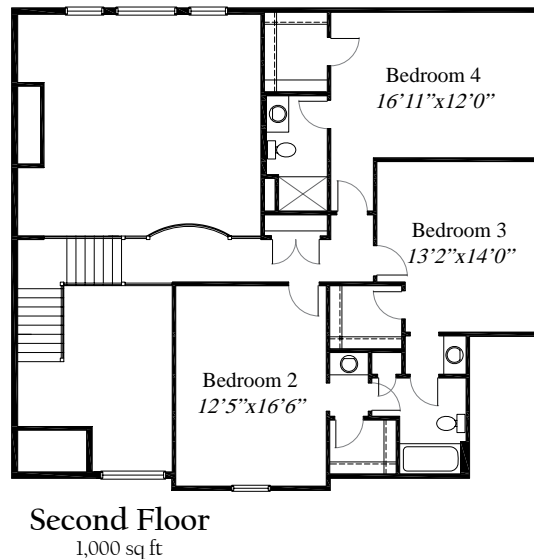
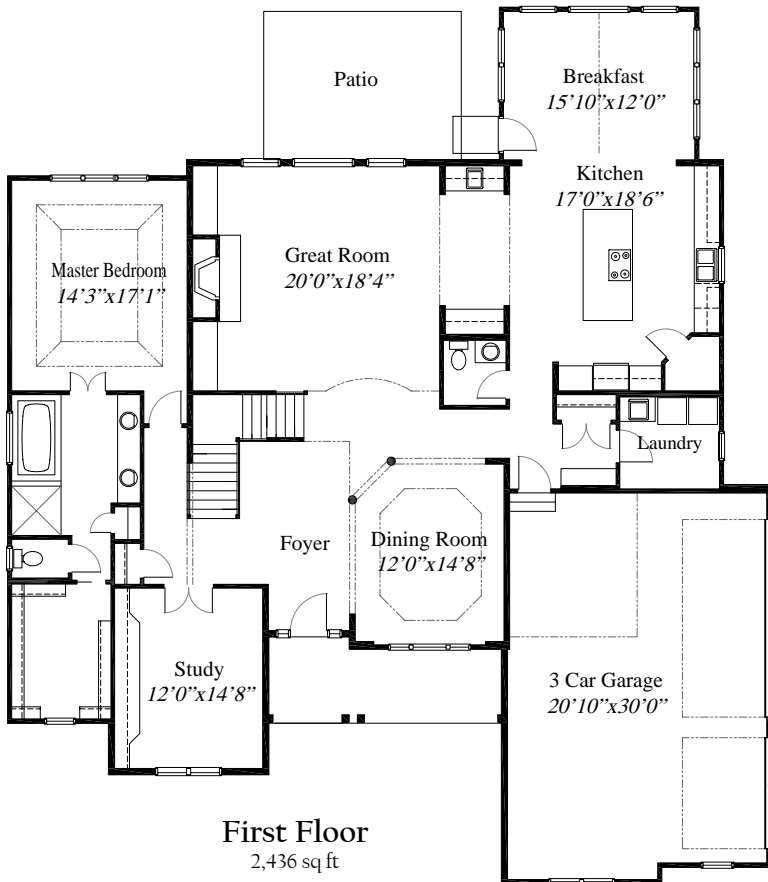


Featured Plan

The Pissario



3,436 SqFt home, featuring 4 Bedrooms, 3 1/2 Baths and a 3 car garage. The Gourmet Kitchen has a large working island, Breakfast area and a walk-in Pantry. The Great Room is finished with custom built-ins, a fireplace, side bar and a 2-story ceiling. Off the main Foyer is a Private Study and a Formal Dining Room. The First Floor Master Bedroom has a coffered ceiling, huge walk-in closet and a deluxe Bath. The second level features 3 Bedrooms, each with a walk-in closet. A gorgeous Balcony overlooks the entertaining spaces in this custom plan. A full, poured wall Basement is included.



WWW.RH-HOMES.COM



The renderings in this brochure are an artist's concept of elevations from blueprints. The landscaping features, colors and textures are for aesthetic purposes only. Floor plans and sizes are subject to change without notice. Consult a set of blueprints for exact dimensions and details. Some of the features shown can be optional. This brochure is for illustration purposes only and is not part of any legal document.