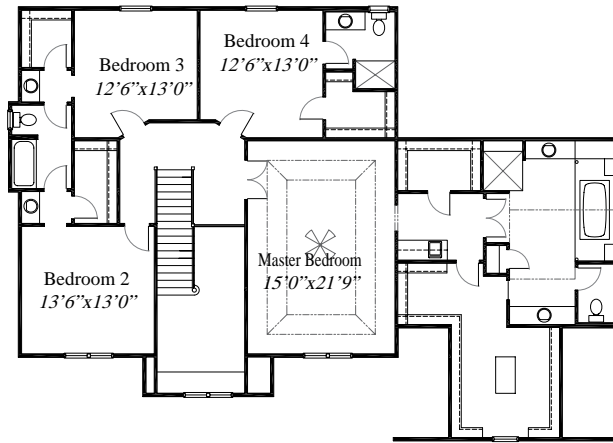
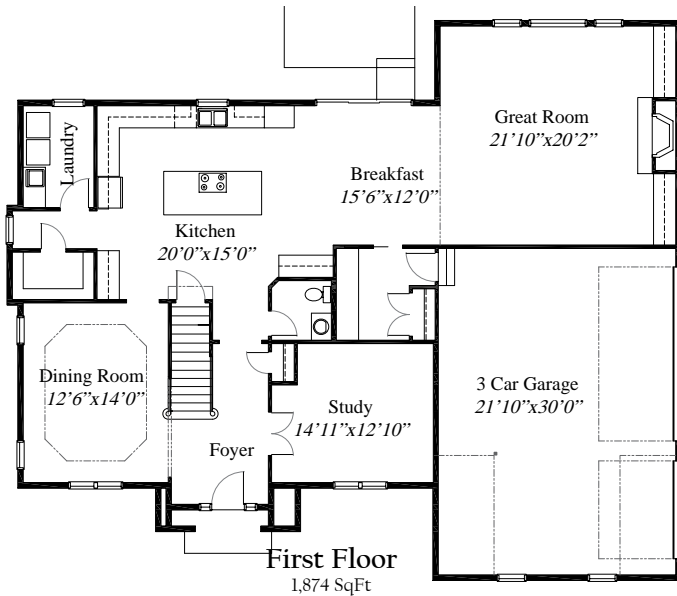


# Featured Plan

## The Oxford



3,692 Sq Ft home, with 4 Bedrooms and 3 1/2 Baths. Spacious Gourmet Kitchen with a cook-top island and walk-in Pantry. Large Breakfast area open to the Family Room with a fireplace and custom built-ins. A Formal Dining Room and Den flank the 2-Story Foyer. Second level offers a Master Suite with a Deluxe Bath, Sitting Room, walk-in closet and coffered ceiling. All Bedrooms have walk-in closets. Three-car side loading Garage and a full basement add to the storage space of this unique custom home.



WWW.RH-HOMES.COM



The renderings in this brochure are an artist's concept of elevations from blueprints. The landscaping features, colors and textures are for aesthetic purposes only. Floor plans and sizes are subject to change without notice. Consult a set of blueprints for exact dimensions and details. Some of the features shown can be optional. This brochure is for illustration purposes only and is not part of any legal document.