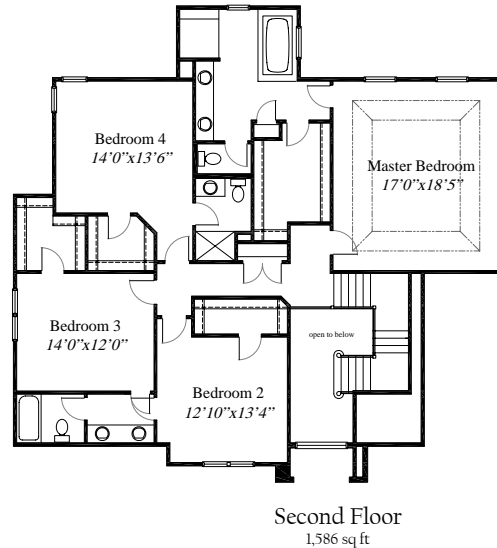
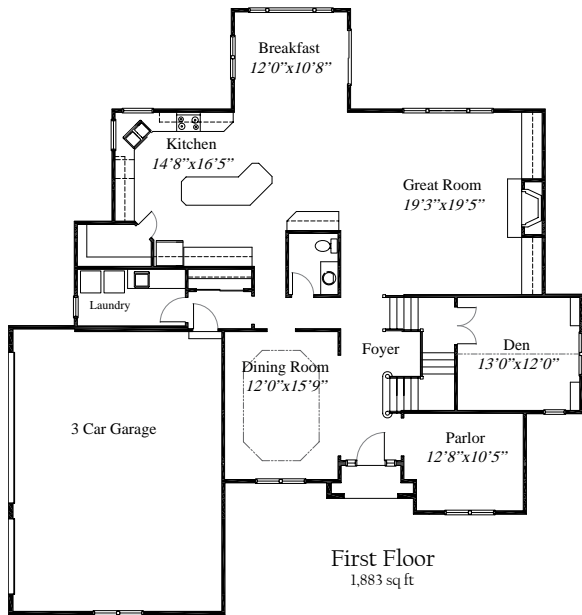


Featured Plan

The Messina



This 3,469 SqFt custom home features 4 Bedrooms, 3 1/2 Baths and a 3 Car Side Load Garage. This open plan has a Great Room with custom built-ins surrounding a fireplace. The Gourmet Kitchen has a walk-in pantry and is open to the Breakfast area and Great Room. Off the 2-story Foyer is a Formal Dining Room and Parlor. The elegant stairway leads to a Den on the split level. The Second floor features the Master Bedroom with a Deluxe Bath, huge walk-in closet and coffered ceilings. An additional 3 bedrooms, each with walk-in closets, completes the second level.



WWW.RH-HOMES.COM



The renderings in this brochure are an artist's concept of elevations from blueprints. The landscaping features, colors and textures are for aesthetic purposes only. Floor plans and sizes are subject to change without notice. Consult a set of blueprints for exact dimensions and details. Some of the features shown can be optional. This brochure is for illustration purposes only and is not part of any legal document.