

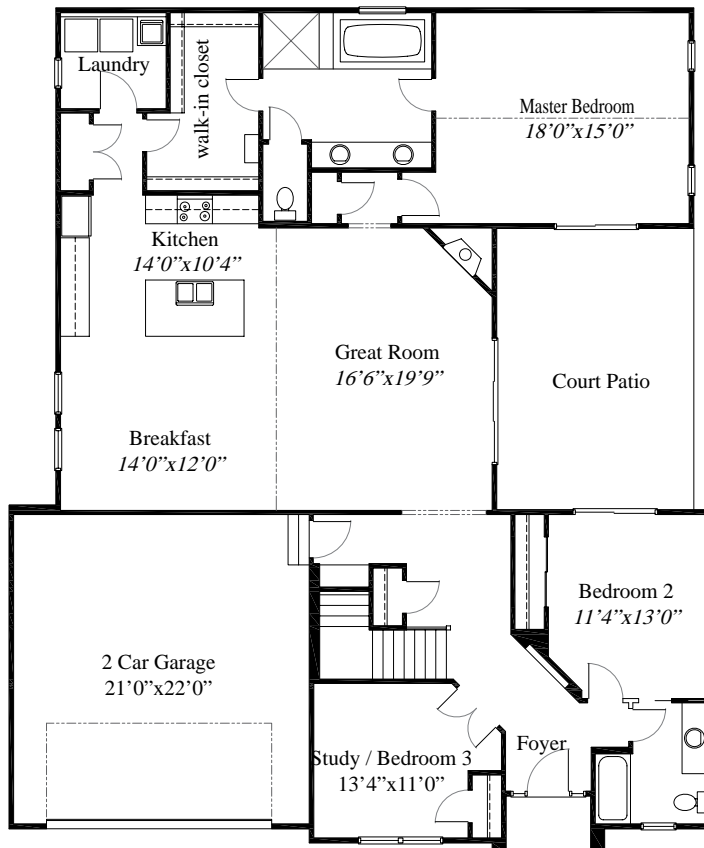
Featured Plan

The Hopedale



1,993 SqFt Ranch home with 3 Bedrooms, 2 Baths and a 2 Car Garage. This home has a Private Study or third Bedroom and a second Bedroom off the Foyer. Great Room is completely open to Gourmet Kitchen and Casual Dining area, and offers access and views to Courtyard Patio. Off the Kitchen is a large Pantry and separated Laundry Room. The Master Bedroom has a Deluxe Bath, large walk-in closet and access to the patio as well. This custom ranch has a 2 Car Garage and a huge full basement for storage or extra finishing space.

Olentangy Schools



First Floor
1,993 sq ft

WWW.RH-HOMES.COM



The renderings in this brochure are an artist's concept of elevations from blueprints. The landscaping features, colors and textures are for aesthetic purposes only. Floor plans and sizes are subject to change without notice. Consult a set of blueprints for exact dimensions and details. Some of the features shown can be optional. This brochure is for illustration purposes only and is not part of any legal document.