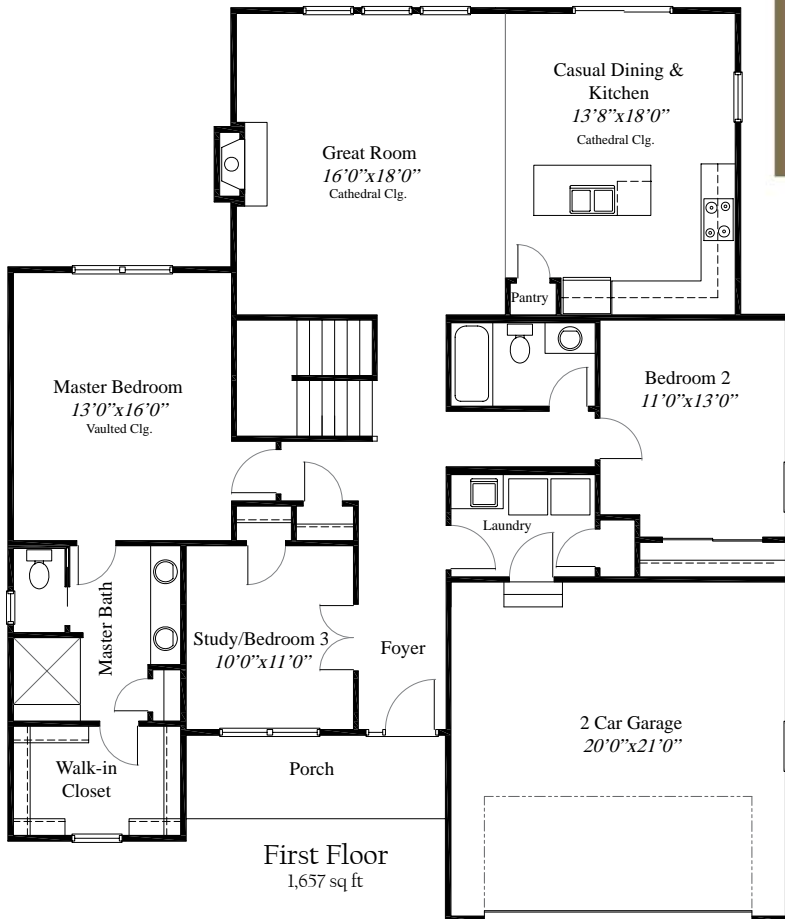


Featured Plan

The Bari



This 1,657 Sqft. Custom Ranch has 3 Bedrooms 2 Baths and a 2 Car Garage. The 3rd Bedroom can be used as a Study. The Kitchen is open to a large Casual Dining Area and to the Family Room, which has a fireplace and plenty of windows. The Casual Dining Area has a sliding glass door to access the rear yard or optional patio/deck. The Master Bedroom has a vaulted ceiling, large walk-in closet and a deluxe bath. This custom Ranch has a separate laundry room near the Garage. A full basement is excellent for added finished space or for storage. This Ranch has a large front porch and a 2 Car front loading Garage.



WWW.RH-HOMES.COM



The renderings in this brochure are an artist's concept of elevations from blueprints. The landscaping features, colors and textures are for aesthetic purposes only. Floor plans and sizes are subject to change without notice. Consult a set of blueprints for exact dimensions and details. Some of the features shown can be optional. This brochure is for illustration purposes only and is not part of any legal document.