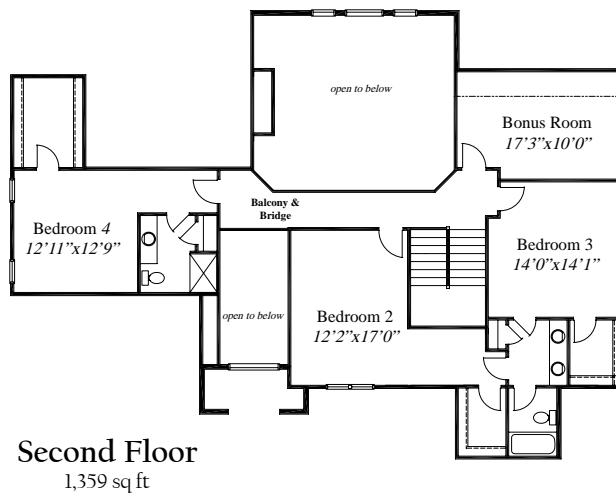
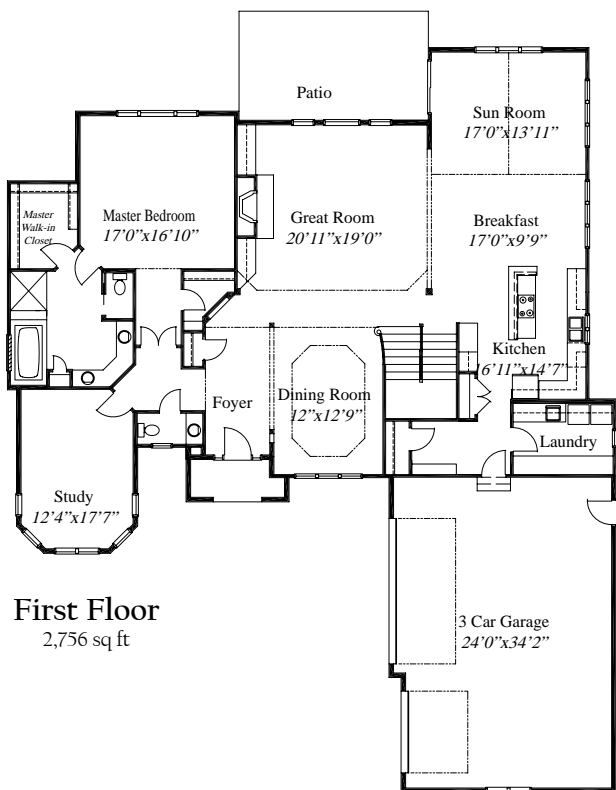


Featured Plan

The Essex



4,115 SqFt home with 4 Bedrooms and a 3-car Garage. The Gourmet Kitchen features a large cook-top island and pantry and is open to the Great Room, Breakfast Area and Sun Room. A large Concrete Patio is included off the Sun Room. The first floor Master Bedroom features a Deluxe Bath and walk-in Closet. A Private Study and Formal Dining Room with tray ceiling are off the main 2-Story Foyer. The second level offers three additional Bedrooms with walk-in Closets, two Baths and a Bonus Room. A beautiful balcony overlooking the Great room finishes the second floor.



WWW.RH-HOMES.COM



The renderings in this brochure are an artist's concept of elevations from blueprints. The landscaping features, colors and textures are for aesthetic purposes only. Floor plans and sizes are subject to change without notice. Consult a set of blueprints for exact dimensions and details. Some of the features shown can be optional. This brochure is for illustration purposes only and is not part of any legal document.