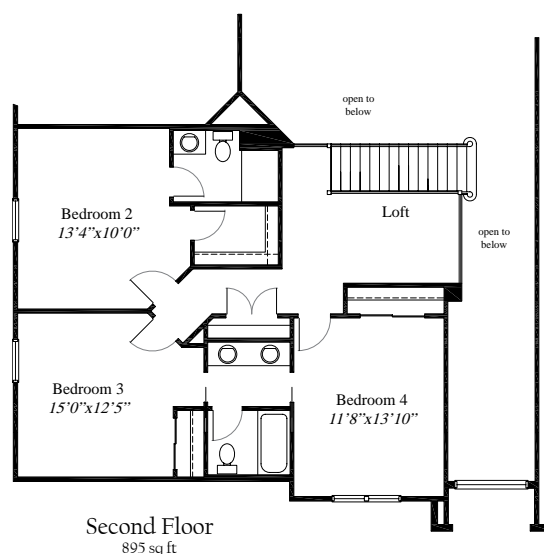
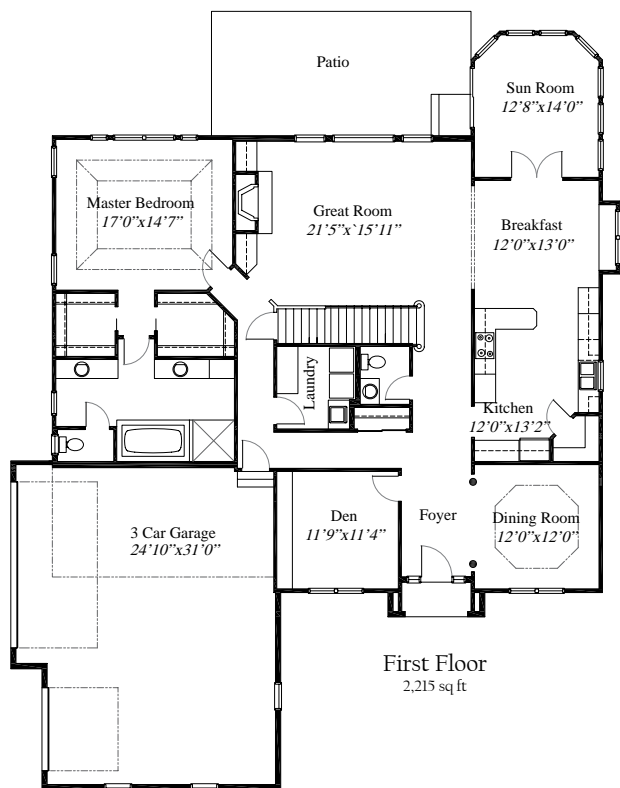


Featured Plan

The Chardin II



3,110 SqFt 4 Bedroom, 3 1/2 Bath home with a first floor Master Bedroom and Deluxe Bath. The Master Bedroom includes vaulted ceilings and a huge walk in closet. The Great Room has a two story vaulted ceiling and a corner fireplace, which is all open to the Breakfast area and spacious Kitchen. This level also offers a formal Dining Room and a Private Study. The second story features a large Loft area with three Bedrooms and two Baths. An oversized, 3 car garage, and a spacious Laundry area complete this custom home.



WWW.RH-HOMES.COM



The renderings in this brochure are an artist's concept of elevations from blueprints. The landscaping features, colors and textures are for aesthetic purposes only. Floor plans and sizes are subject to change without notice. Consult a set of blueprints for exact dimensions and details. Some of the features shown can be optional. This brochure is for illustration purposes only and is not part of any legal document.