

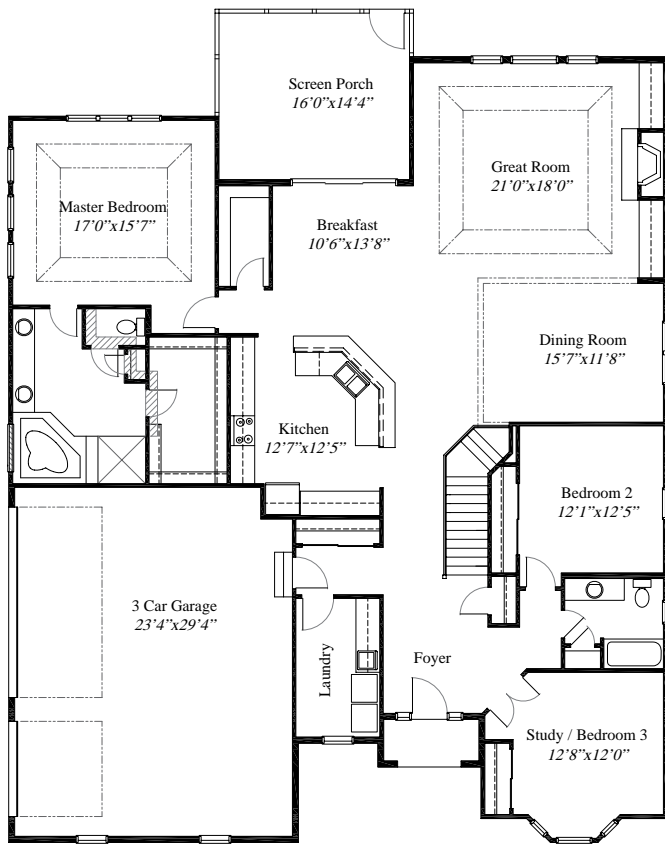
Featured Plan

The Campania

R & H
since 1970
ROMANELLI
&
HUGHES



2,528 SqFt ranch with Huge Master Bedroom, including a Deluxe Bath, large walk-in closet and a coffered Bedroom ceiling. Optional Study or third Bedroom off the 9' Foyer. Gourmet Kitchen with a large walk-in Pantry and Breakfast Bar, is open to the Formal Dining Room and Great Room. Great Room with coffered ceiling, includes a fireplace and custom built-ins. This custom ranch also has a 3-car sideload Garage and a full Basement for plenty of storage.



First Floor
2,528 sq ft



WWW.RH-HOMES.COM



The renderings in this brochure are an artist's concept of elevations from blueprints. The landscaping features, colors and textures are for aesthetic purposes only. Floor plans and sizes are subject to change without notice. Consult a set of blueprints for exact dimensions and details. Some of the features shown can be optional. This brochure is for illustration purposes only and is not part of any legal document.