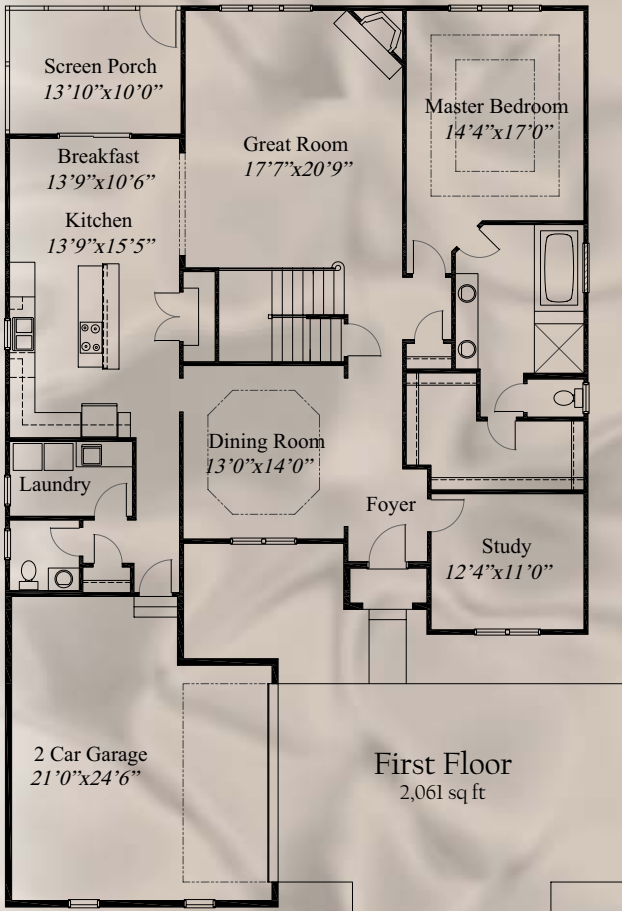


Lindsey Woods Featured Plans

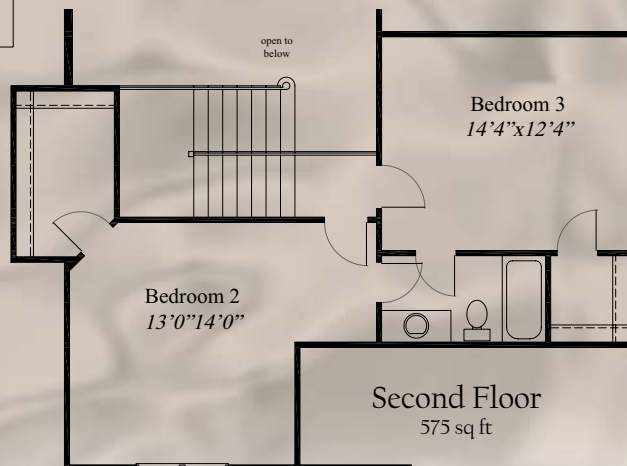


Plan "D"

Alternate Elevation



2,614 SqFt Patio home, featuring 3 Bedrooms and 2 1/2 Baths or optional 2 Bedrooms with huge loft area. First Floor Master Bedroom with Coffered Ceiling, Deluxe Bath and a spacious walk-in closet. Two Story Great Room is finished with a corner fireplace, rear windowed wall and custom built-ins. Gourmet Kitchen with a large cook-top island, all open to a Breakfast area and Great Room. Formal Dining Room and private Study are off the main 2-Story Foyer entry. Oversized 2 Car Garage is side-load, courtyard style.



ROMANELLI & HUGHES
BUILDING COMPANY
614-891-0674

Sara Romanelli (614) 264-2420



The renderings in this brochure are an artist's concept of elevations from blueprints. The landscaping features are for aesthetic purposes only. Floor plans and sizes are subject to change without notice. Consult a set of blueprints for exact dimensions and details. Some of the features shown can be optional. This brochure is for illustration purposes only and is not part of any legal document.